

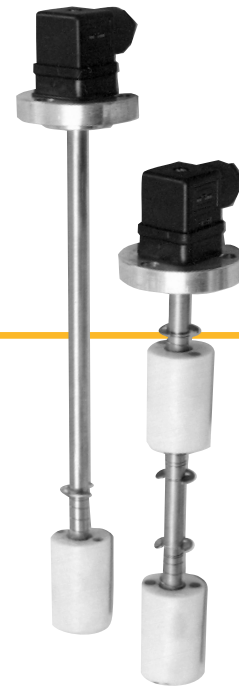
Level Float Switch - LEN Series

Description

- ◆ The electromagnetic level indicator activates an electric signal when the fluid inside the tank reaches a stated level.

The float traveling up and down the tube contains a magnet: when the float reaches the reed switch enclosed in the tube, the magnet causes the contact to close (or open).

- ◆ LEN series is available with three hole flanges or with a 1" BSP threaded connection, with 1 or 2 floats, in a standard range of lengths.



Technical Data

- ◆ Materials:

Connector: Plastic
Flange: Aluminum
Tube: Brass
Float: Plastic

- ◆ Electrical Data:

Power communicable to DC: 60W
Power communicable to AC: 80VA
DC current intensity: 1.3A
AC current intensity: 2A
Communicable voltage: 250V
Frequency: 50 Hz/60 Hz
Capacitance of open contacts: 4pF
Insulation resistance 10 ohms
Connector protection: IP 65

- ◆ N.C. to N.O. Conversion:

To convert an "LEN" from N.C. to N.O. or vice versa, remove the bottom "C" clip on the rod, turn the float upside down and replace both the float and "C" clip.

- ◆ Working Pressure:

40 PSI
For higher pressure, please consult Technical Dept.

- ◆ Working Temperature:

From -20°C to +100°C

- ◆ Warning:

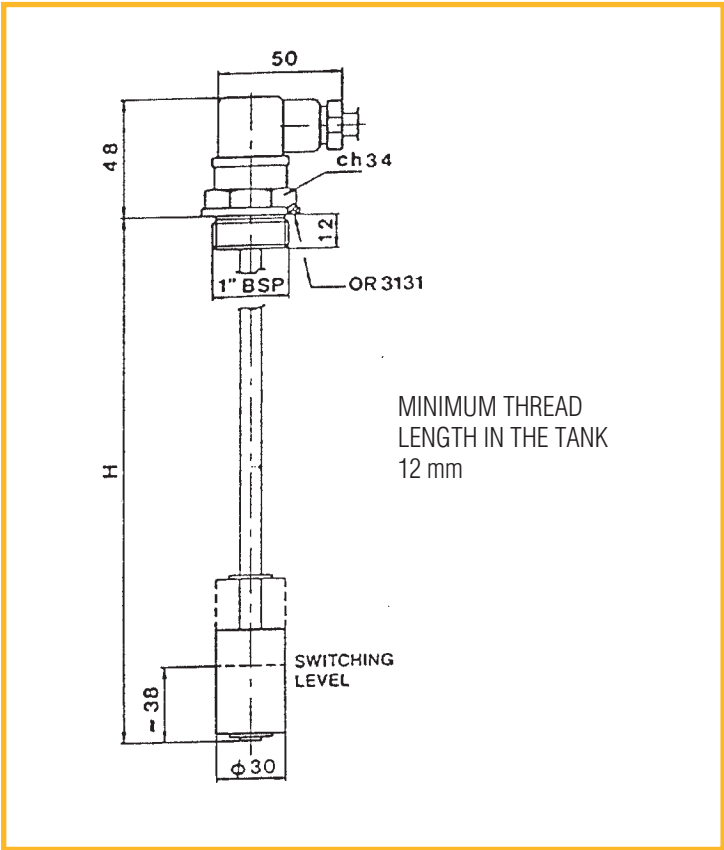
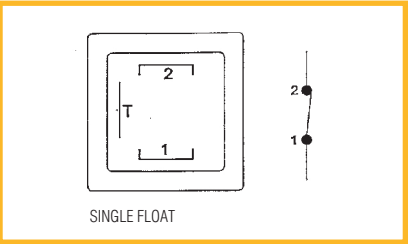
These indicators are designed for vertical installation. The float must be at least 35 mm away from any ferrous surface.

Installation Data LEN Series

◆ Dimensions 1 Float

Size	H(mm)
150	150
200	200
250	250
350	350

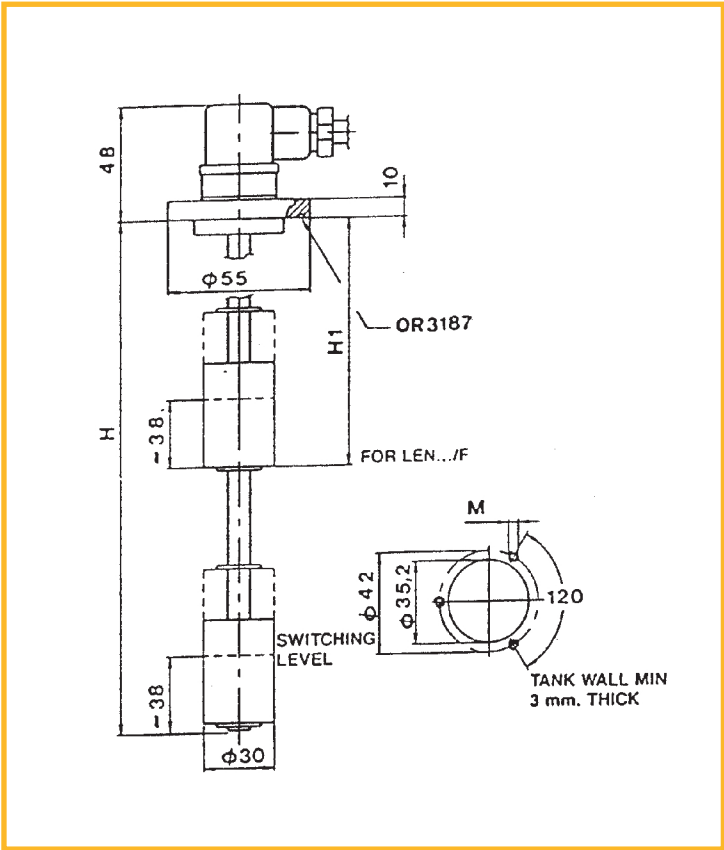
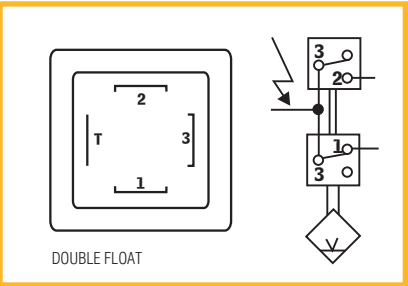
◆ Electrical Diagrams



◆ Dimensions 2 Floats

Size	H(mm)	H1(mm)
200	200	95
250	250	105
350	350	115
400	400	115
500	500	125

◆ Electrical Diagrams



Ordering Information LEN Series

