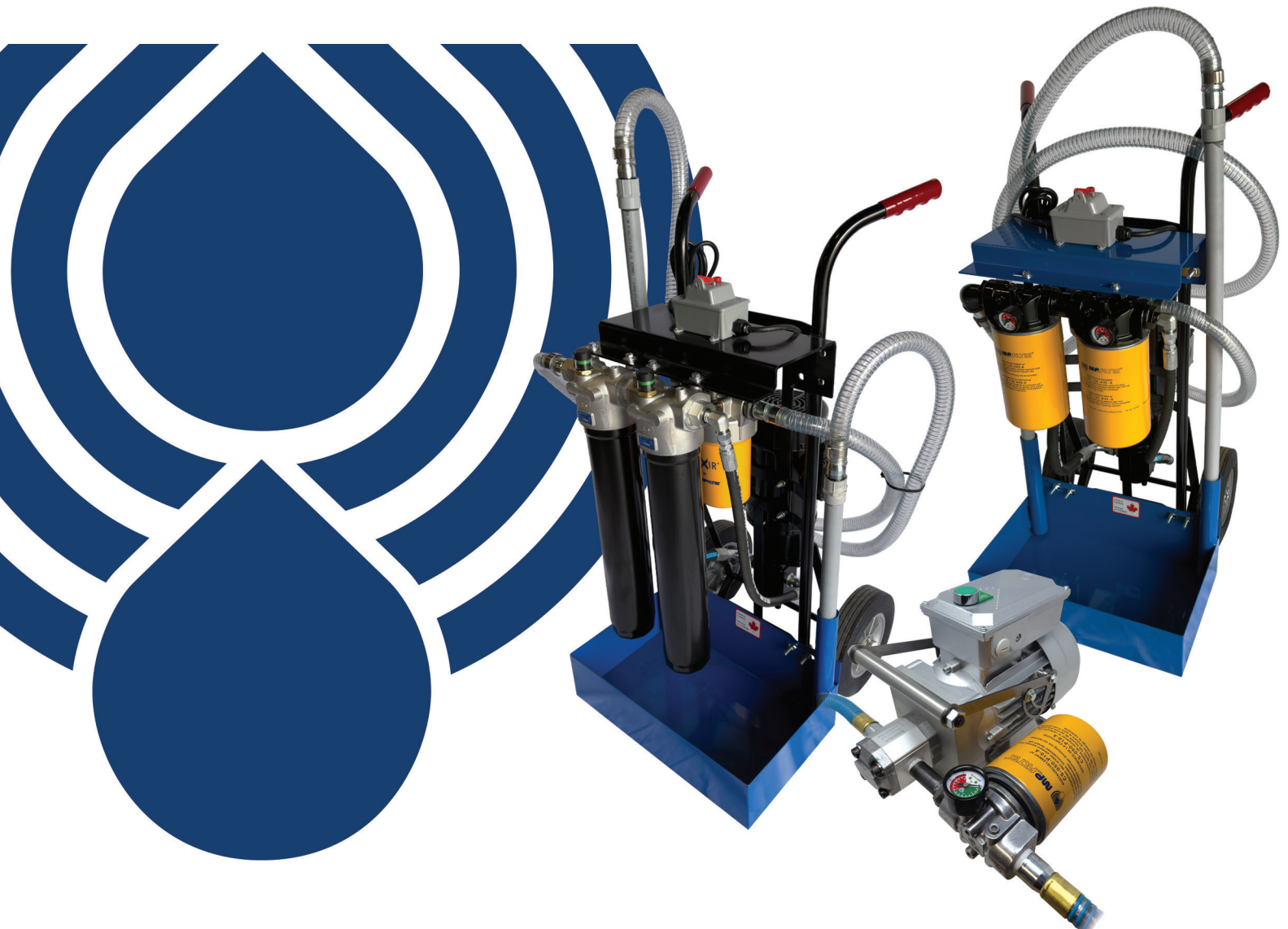


# Portable Filtration Units



PASSION TO PERFORM



## Portable Filter Carts

Available in two types

100x2 Spin-On Filter Cart



211-3 Cartridge Filter Cart



### GENERAL INFORMATION

MP Filtri Canada Inc. offers two types of portable, compact filter carts which are ideal for use on a wide variety of in-plant machinery or mobile hydraulic equipment. These units are ideal for fluid transfer, cleaning up existing systems or pre-filtering new fluids. Oil is pumped at approximately 5 or 10 gpm through two filters connected in series. The first filter removes larger particles, and the second filter removes finer particles. Visual indicators on all filters let you know each filter's status. Use an optional water-removal cartridge in the second filter to remove water from hydraulic fluid.

### APPLICATIONS

- Filtering new fluid prior to adding to the system.
- Transferring bulk oil.
- Temporary kidney loop to clean up existing oil.
- Filtering during system startup.
- Water absorbing elements can be used to obtain particulate and water removal.

## 100x2 Spin-On Filter Cart

**10 GPM Standard (5 GPM Optional)**

### FEATURES

- Integrated SFEX-110 suction filter with M90 wire mesh element for pump protection.
- Two Spin-On Filter Heads with 25 PSI bypass mounted in series.
- Each filter head includes a visual clogging indicator.
- Uses standard MP Filtri CSG-100/150 spin-on filter elements.
- Elements are available for both Particulate or Water removal.
- Two 10 ft anti-static transparent suction & return hoses with extension tubes.
- Large drip tray.
- 1HP TEFC Single Phase 110VAC/60hz electric motor with 3 meter long electrical power cord and wall plug.
- 10 GPM Gear Pump (standard). 5 GPM (optional).
- Optional ICM-2 or ICM-4 (WiFi) inline particle counter with moisture sensor.
- Filter elements are not included and must be ordered separately.
- **Operating Viscosity Range:**
  - Recommended operating viscosity:* 20 - 65 mm<sup>2</sup>/s (cSt)
  - Minimum operating viscosity:* 12 mm<sup>2</sup>/s (cSt)
  - Maximum operating viscosity:* 100 mm<sup>2</sup>/s (cSt)
- **Operating temperature:**
  - Oil:* -20 to 80°C / -4 to 176°F
  - Ambient:* -22 to 55°C / -8 to 130°F

### ORDERING CODE

**FIL CART 100x2-10GPM-1HP** 10 GPM (Standard)

**FIL CART 100x2-5GPM-1HP** 5 GPM (Optional)

*Filter elements are not included in the cart and must be ordered separately. (See page 7.)*



## 211-3 Cartridge Filter Cart

**10 GPM Standard (5 GPM Optional)**

**High dirt-holding capacity**

### FEATURES

- Integrated SFEX-110 suction filter with M90 wire mesh element for pump protection.
- Two LMP-211-3 series filters with 50 PSI bypass mounted in series with a long bowl length providing superior dirt-holding capacity.
- Each element may offer up to 4X the surface area compared to standard spin-on filters.
- Each filter includes an automatic reset visual clogging indicator.
- A wide range of elements are available that provide both high filtration efficiency and dirt-holding capacity.
- Two 10 ft anti-static transparent suction & return hoses with extension tubes.
- Large drip tray.
- 1 HP TEFC Single Phase 110VAC/60hz electric motor with 3 meter long electrical power cord and wall plug.
- 10 GPM Gear Pump (standard). 5 GPM (optional).
- Optional ICM-2 or ICM-4 (WiFi) inline particle counter with moisture sensor.
- Filter elements are not included and must be ordered separately.
- **Operating Viscosity Range:**  
*Recommended operating viscosity:* 20 - 65 mm<sup>2</sup>/s (cSt)  
*Minimum operating viscosity:* 12 mm<sup>2</sup>/s (cSt)  
*Maximum operating viscosity:* 100 mm<sup>2</sup>/s (cSt)
- **Operating temperature:**  
*Oil:* -20 to 80°C / -4 to 176°F  
*Ambient:* -22 to 55°C / -8 to 130°F



### ORDERING CODE

**FIL CART 211-3-10GPM-1HP** 10 GPM (Standard)

**FIL CART 211-3-5GPM-1HP** 5 GPM (Optional)

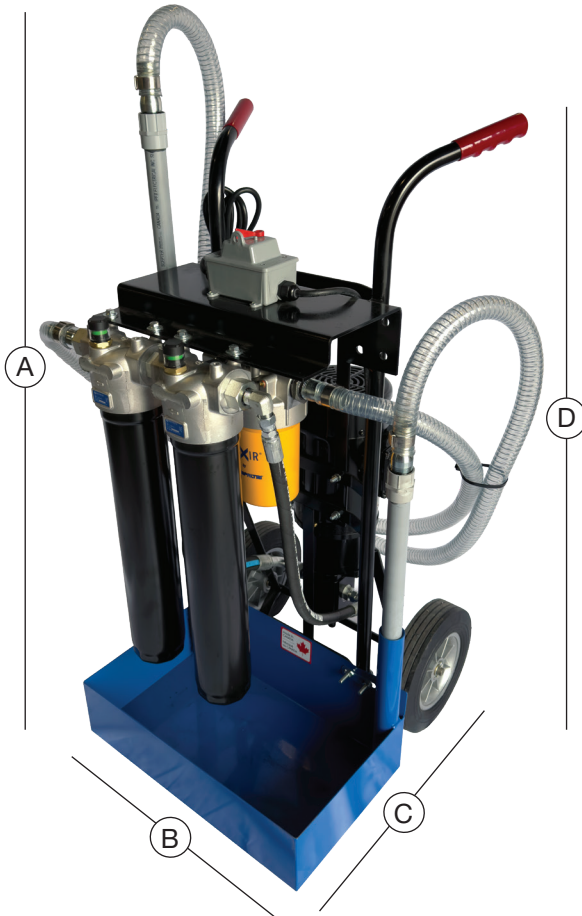
*Filter elements are not included in the cart and must be ordered separately. (See page 7.)*



# PORTABLE FILTER CARTS

## DIMENSIONS

A = Height: 51 in (1295 mm) C = Depth: 23 in (584 mm)  
 B = Width: 20 in (508 mm) D = Handle Height: 45 in (1143 mm)



### FIL CART 211-3

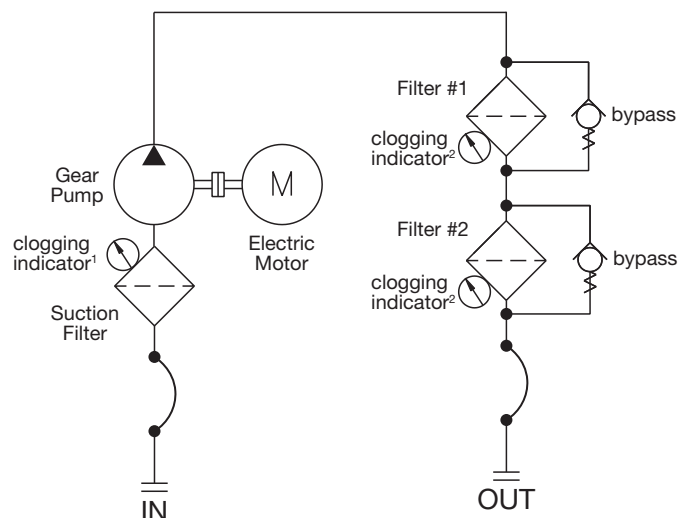
Weight: 165 lbs [74.8 kg]  
 Skid size: 32x32x52"  
 Skid wt. 200 lbs [90.7 kg]



### FIL CART 100x2

Weight: 130 lbs [59 kg]  
 Skid size 48x32x54"  
 Skid wt. 165 lbs [74.8 kg]

## SCHEMATIC



#### Clogging Indicators:

- 1 Vacuum indicator common on both types of filter carts suction filter.
- 2 Differential pressure indicator on the FIL CART 211-3  
Barometric (pressure) indicator on the FIL CART 100x2

## Filter Carts with Inline Contamination Monitor

**ICM-2.0 or ICM-4.0**



ICM-2.0



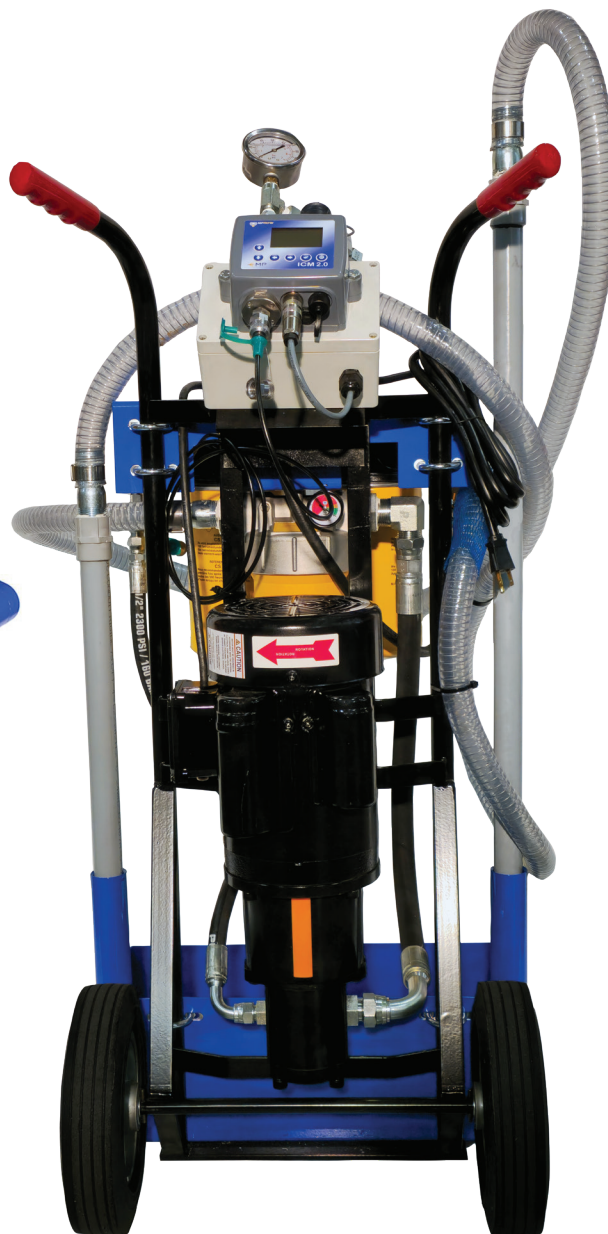
ICM-4.0 (WiFi)

### GENERAL INFORMATION

The Inline Contamination Monitor automatically measures and displays particulate contamination, moisture and temperature levels in various fluid media. It is designed specifically to be mounted directly to systems, where ongoing measurement or analysis is required, and where space and costs are limited.

### FEATURES

- 8 channel contamination measurement & display.
- Measures and displays the following international standard formats; ISO 4406:1999, NAS 1638, AS 4059E and ISO 11218.
- Moisture and temperature sensing.
- Data logging and 4000 test result memory.
- Manual, automatic and remote control flexibility.
- Multicolour LED and remote alarm signals.
- Robust die cast aluminium construction.
- LPA View software (included).
- Various communication protocols as standard RS485, MODBUS, CANBUS, 4-20mA analogue output as standard.



*Filter Cart 100x2 with optional ICM  
Inline Contamination Monitor*

# PORTABLE FILTER CARTS

## DESIGNATION & ORDERING CODE

Series	Example: <b>FIL CART</b> <b>211-3</b> - <b>10GPM</b> - <b>1HP</b>			
<b>FIL CART</b>				
<b>Type</b>				
<b>100x2</b> With dual CSG spin-on filters				
<b>211-3</b> With dual LMP cartridge filters				
<b>Inline Contamination Monitor</b>				
<b>Omit</b> Without ICM				
<b>ICM2</b> With ICM 2.0 In-line contamination monitor				
<b>ICM4</b> With ICM 4.0 WiFi technology integrated ICM				
<b>Flow Rate</b>				
<b>10GPM</b> 10 gallon per minute gear pump (Standard)				
<b>5GPM</b> 5 gallon per minute gear pump (Optional)*				
* Recommended for higher viscosity oil				
<b>Electric Motor</b>				
<b>1HP</b> 1 HP TEFC Single Phase 110VAC/60 Hz				
* For custom options not stated, please contact MP Filtri Canada Inc.				

### Important

Please note that filter elements are not included when ordering filter carts.

Depending on your filtration needs you will need to choose two filter elements from page 7.

# FILTER ELEMENTS

## FILTER ELEMENTS FOR 100x2 SPIN-ON FILTER CART

<b>Series</b>	<i>Example:</i> <b>CSG150</b> - <b>A10</b> - <b>A</b>		
<b>CSG100   CSG150   CSGW100<sup>▲</sup>   CSGW150<sup>▲●</sup></b>			
<b>Filtration Rating (Filter Media)</b>			
<b>A03<sup>▲</sup></b>	Inorganic microfiber	3 µm	
<b>A06</b>	Inorganic microfiber	6 µm	
<b>A10</b>	Inorganic microfiber	10 µm	
<b>A25</b>	Inorganic microfiber	25 µm	
<b>M25</b>	Wire mesh	25 µm	
<b>M60</b>	Wire mesh	60 µm	
<b>M90</b>	Wire mesh	90 µm	
<b>P10<sup>▲●</sup></b>	Resin-impregnated paper	10 µm	
<b>P25<sup>▲</sup></b>	Resin-impregnated paper	25 µm	
<p><sup>▲●</sup> The CSGW series of canisters removes water from oil while filtering the oil at the same time. Featuring a special polymer layer to absorb free water in the oils, and unique composition of media layers, the element filters solid particles with water retention.</p>			
<b>Seals</b>			
<b>A</b>	NBR		

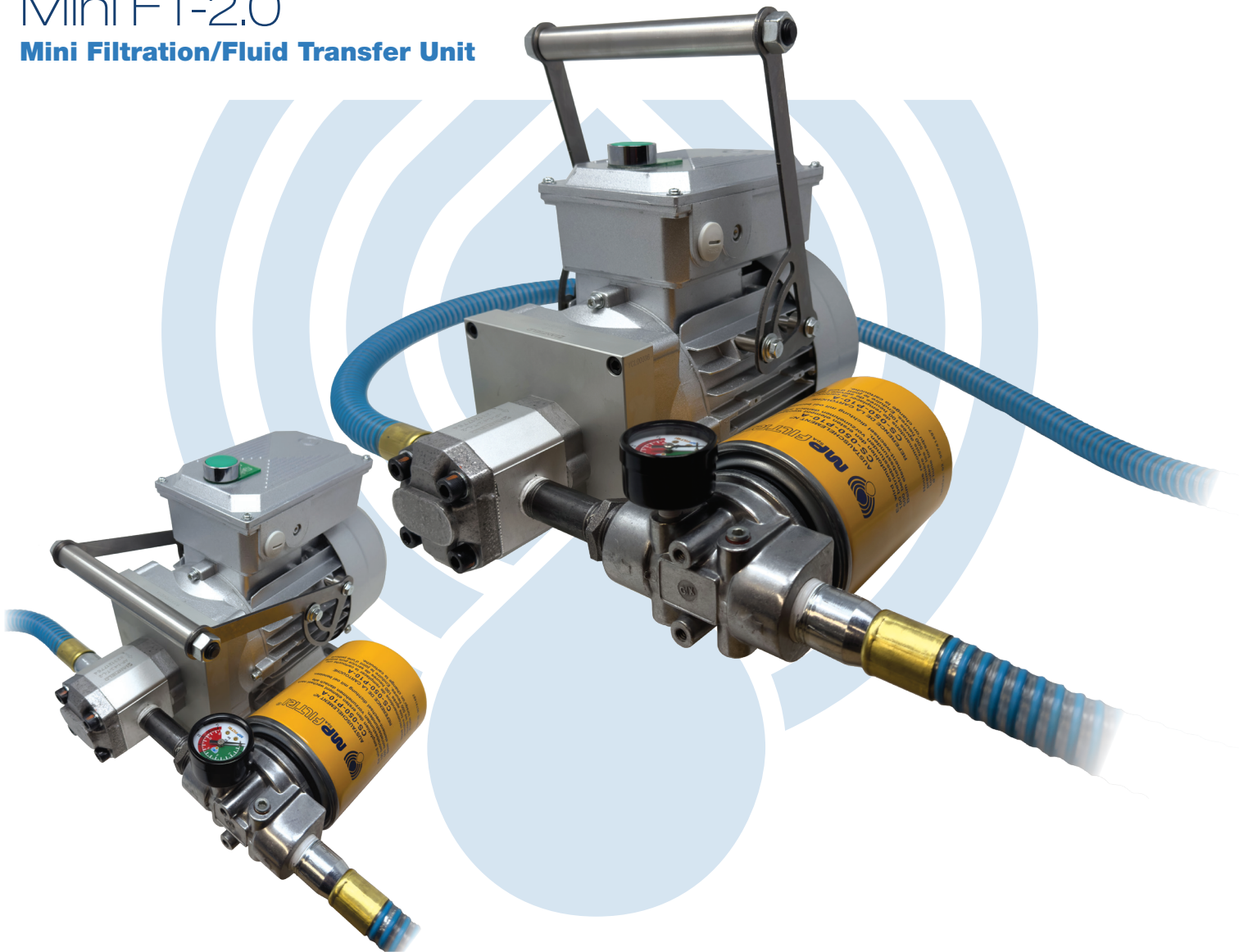
## FILTER ELEMENTS FOR 211-3 CARTRIDGE FILTER CART

<b>Series</b>	<i>Example:</i> <b>CU210</b> - <b>3</b> - <b>A10</b> <b>A</b> <b>N</b>				
<b>CU210</b>					
<b>Element Length</b>					
<b>3</b>					
<b>Filtration Rating (Filter Media)</b>					
<b>A03</b>	Inorganic microfiber	3 µm	<b>M25</b>	Wire mesh	25 µm
<b>A06</b>	Inorganic microfiber	6 µm	<b>M60</b>	Wire mesh	60 µm
<b>A10</b>	Inorganic microfiber	10 µm	<b>M90</b>	Wire mesh	90 µm
<b>A16</b>	Inorganic microfiber	16 µm	<b>P10</b>	Resin-impregnated paper	10 µm
<b>A25</b>	Inorganic microfiber	25 µm	<b>P25</b>	Resin-impregnated paper	25 µm
<b>WA025</b>	Water absorber inorganic microfiber	25 µm			
<b>Seals</b>					
<b>A</b>	NBR				
<b>Element <math>\Delta p</math></b>					
<b>N</b>	20 bar				



## Mini FT-2.0

### Mini Filtration/Fluid Transfer Unit



## GENERAL INFORMATION

MP Filtri's mini hand carry compact filtration / fluid transfer unit is ideal for use on a wide variety of in-plant machinery or mobile hydraulic equipment with small to medium sized reservoirs.

## APPLICATIONS

- Filtering new fluid prior to adding to the system.
- Transferring bulk oil.
- Temporary kidney loop to clean up existing oil.
- Removing moisture with water removal elements.
- Filtering during system startup.

# MINI FILTRATION / FLUID TRANSFER UNIT

## TECHNICAL SPECIFICATIONS

- 3/4 HP TEFC Single Phase 110VAC/60 Hz electric motor with power cord and switch.
- 2.0 gpm flow.
- Spin-On Filter Heads with 25 PSID bypass.
- Visual clogging indicator.
- Uses standard MP Filtri CSG-050/070 spin-on filter elements.
- Elements are available for both Particulate (CSG) or Water removal (CSGW).
- A 25 micron resin-impregnated paper filter element included (CSG-050-P25A).
- Dimensions: LxWxH: 14" x 12" x 10"
- Weight: 38 lb
- **Operating Viscosity Range:**

*Recommended operating viscosity:*

20 - 65 mm<sup>2</sup>/s (cSt)

*Minimum operating viscosity:* 12 mm<sup>2</sup>/s (cSt)

*Maximum operating viscosity:* 100 mm<sup>2</sup>/s (cSt)

- Many filtration rating and media options available:

CSG-050-A03A

CSG-070-A10A

CSG-050-A10A

CSG-070-P10A

CSG-050-A25A

CSGW-050-P10A

CSG-050-P10A

CSGW-050-P25A

CSG-050-P25A

The CSGW series of canister removes water from oil while filtering the oil at the same time. Featuring a special polymer layer to absorb free water in the oils, and unique composition of media layers, the element filters solid particles with water retention.

- **Operating temperature:**

*Oil:* -20 to 80°C / -4 to 176°F

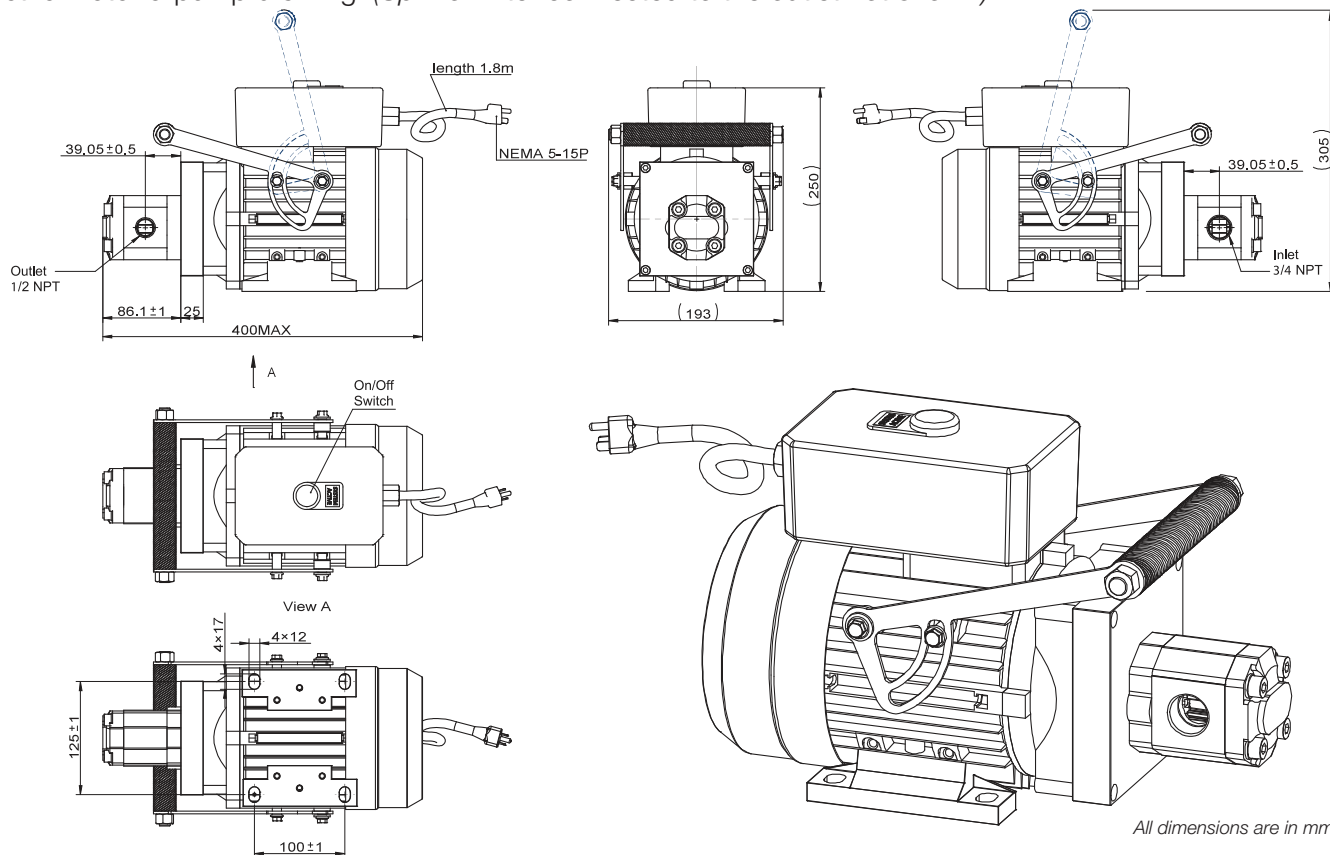
*Ambient:* -22 to 55°C / -8 to 130°F

## ORDERING CODE

MINI-FT-2.0

## DIMENSIONS

Electric motor & pump drawing. (Spin-on filter connected to the outlet not shown)



## NOTES

[illegible]

**MP Filtri represents a reliable partner that helps you meet every need for mobile and industrial applications.**

- Suction Filters / Strainers
- Return Filters
- Return/Suction Filters
- Spin-on Filters
- Low & Medium Pressure In-line Filters
- High Pressure In-line Filters
- High Pressure Manifold Filters
- In-line Stainless Steel Filters
- Manifold Stainless Steel Filters
- Filters for Potentially Explosive Atmospheres (ATEX)
- Clogging Indicators
- Power Transmission
- Mobile Filtration Units
- Accessories For Hydraulic Systems and Tanks
- Contamination Monitoring Products



**PASSION TO PERFORM**



8831 Keele Street  
Concord, Ontario  
L4K 2N1  
Phone: (905) 303-1369  
Fax: (905) 303-7256  
Email: [sales@mpfiltricanada.com](mailto:sales@mpfiltricanada.com)  
Web: [www.mpfiltricanada.com](http://www.mpfiltricanada.com)