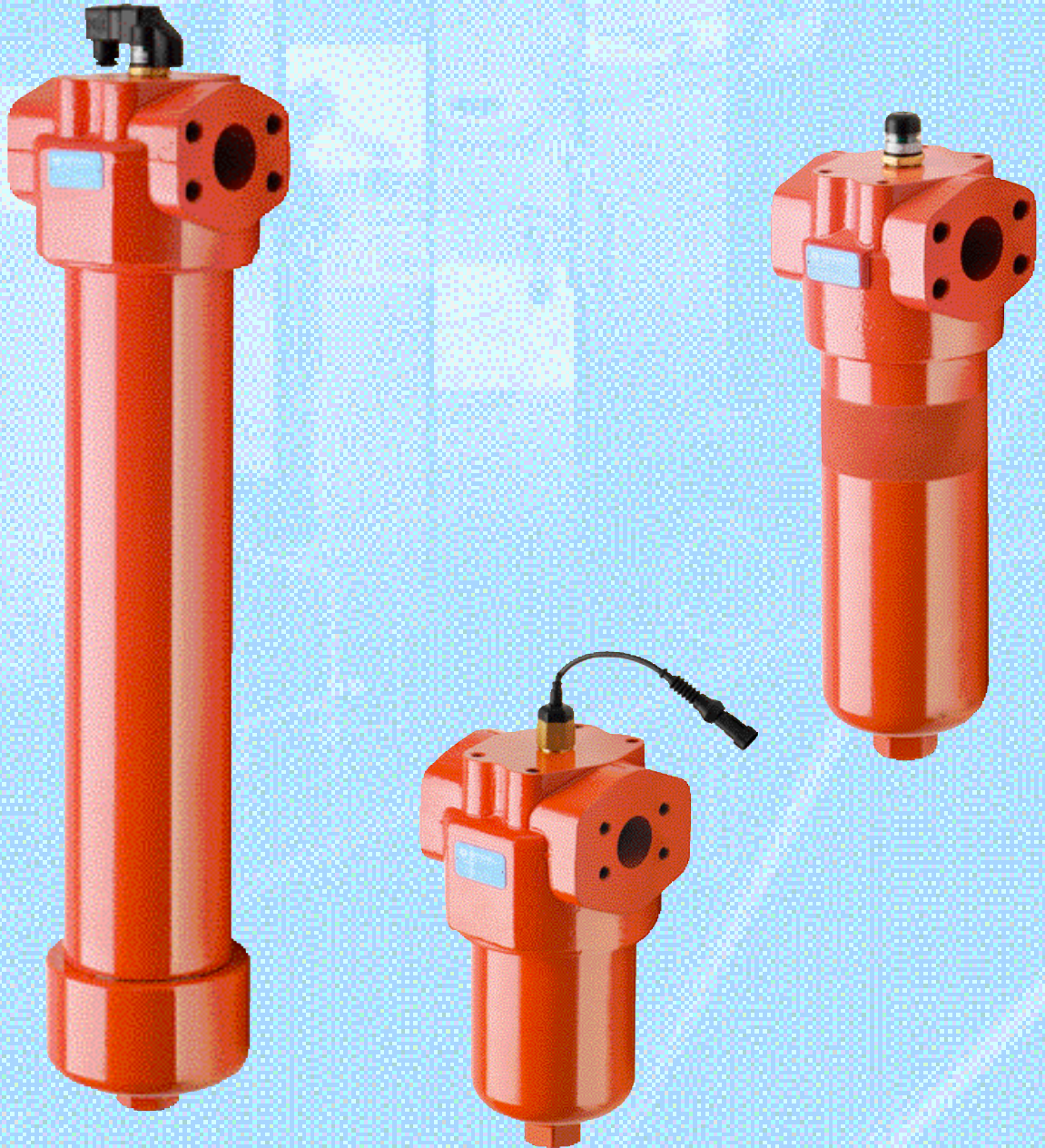
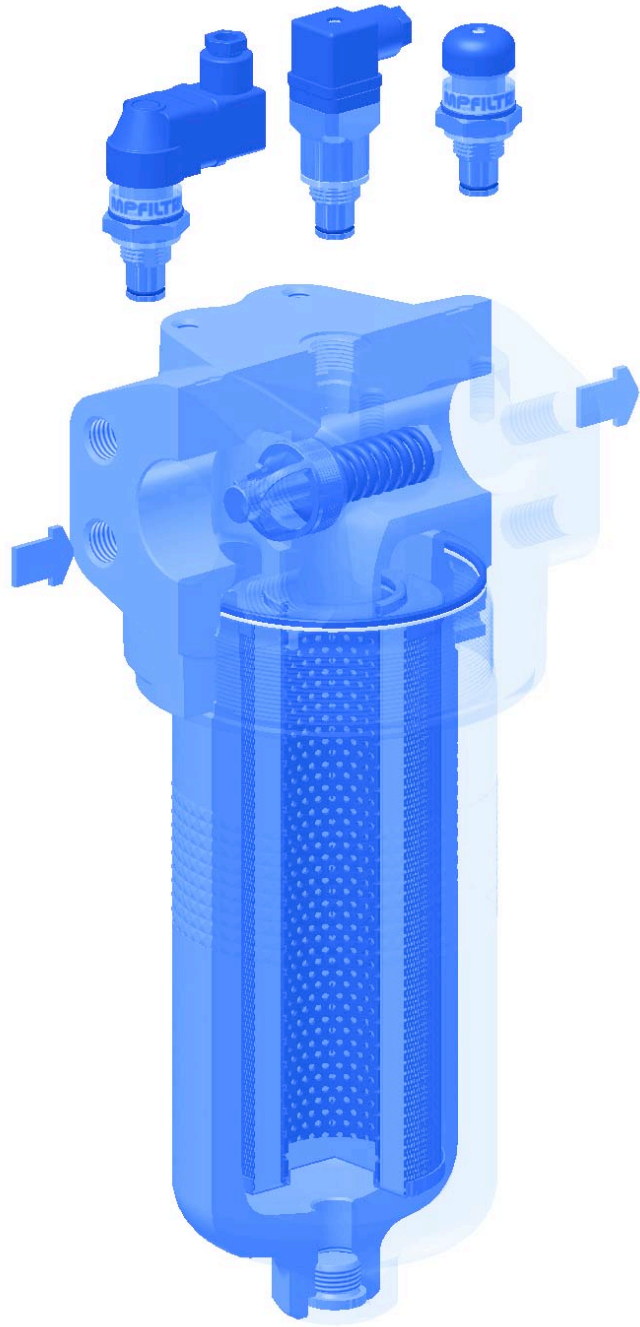


FHP 500



SERIES FHP 500

Working pressure
6000 psi



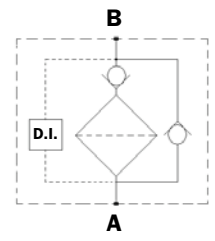
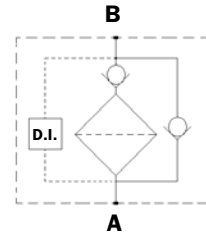
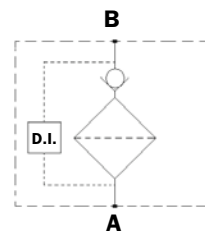
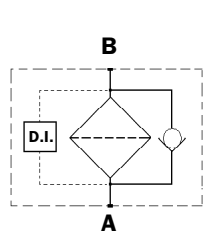
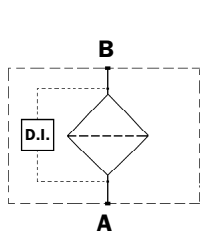
Style S

Style B

Style T

Style D

Style V



Technical data

Filter body (Materials)

- Head: Cast iron (chemical heat treatment)
- Housing: Steel (chemical heat treatment)
- Bypass valve: Steel
- Reverse Flow : Steel
- Check valve: Steel

Pressure

- Maximum operating pressure: 6000 psi (42 MPa)
- Test pressure: 9000 psi (63 MPa)
- Burst pressure: 18000 psi (125 MPa)
- Pulsed pressure fatigue test 1,000,000 of cycles with pressure from 0 to 6000 psi (42 MPa)

Temperature

- From -13°F to + 230°F

Bypass valve

- Opening pressure 90 psi \pm 10%
- Other opening pressures on request.

Elements type Δp

- Elements in microfibre series N : 300 psi
- Elements in microfibre series S : 3000 psi
- Elements in stainless steel mesh series N : 300 psi
- Oil flow from exterior to interior.

Seals

- Standard Nitrile (NBR) series A
- Optional FPM series V

Weights without filter elements (lbs)

Length	1	2	3	4	5
• FHP 500	59.5	68.3	71.2	101.4	116.8

Filter internal volumes (in³)

Length	1	2	3	4	5
• FHP 500	162.3"	206.9"	245.3"	321"	402.1"

Connections

In-line Inlet/Outlet

Compatibility

- Bodies compatible with:
Mineral oils to ISO 2943 - aqueous emulsions
Synthetic fluids, water/glycol.
- Filter elements compatible with:
Mineral oils to ISO 2943 - aqueous emulsions
Synthetic fluids, water/glycol.
- Nitrile (NBR) seals series A, compatible with:
Mineral oils to ISO 2943 - aqueous emulsions
Synthetic fluids, water/glycol.
- V series FPM seals, compatible with:
Synthetic fluids type HS-HFDR-HFDS-HFDU.

Filter Element Area

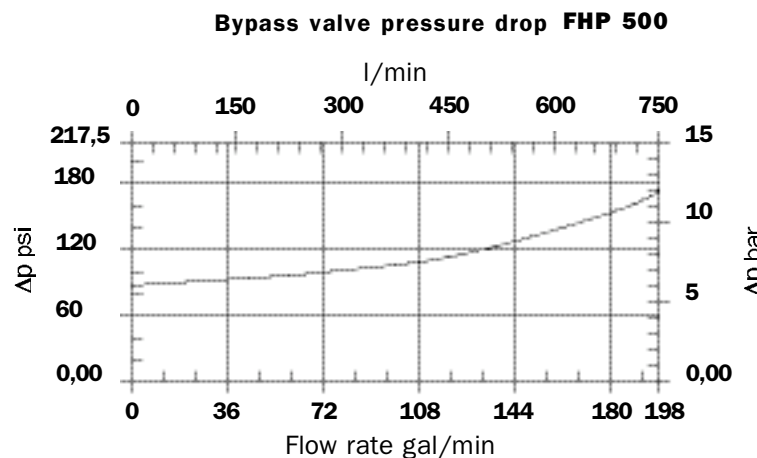
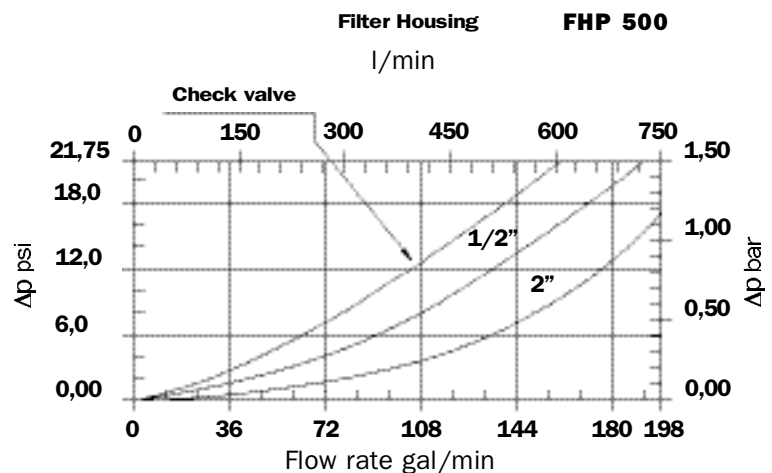
Filter element in stainless steel mesh

Type	Length				
	1	2	3	4	5
HP500	469,7	759,5	1007,5	1519	2015
Values in in ²					

Pressure drops Δp Body

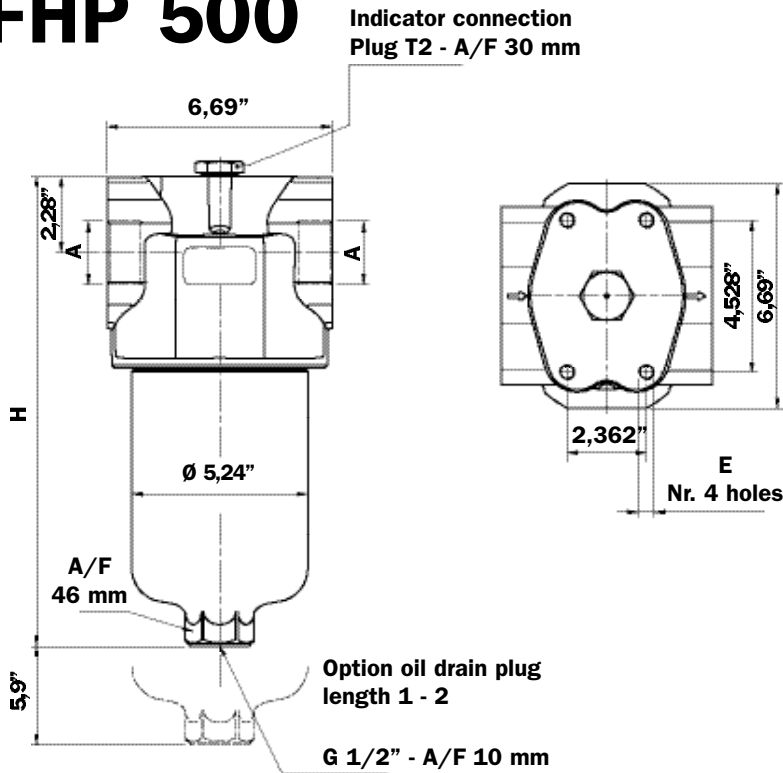
The curves are plotted using mineral oil with specific density 0,86.

Δp varies proportional with density.

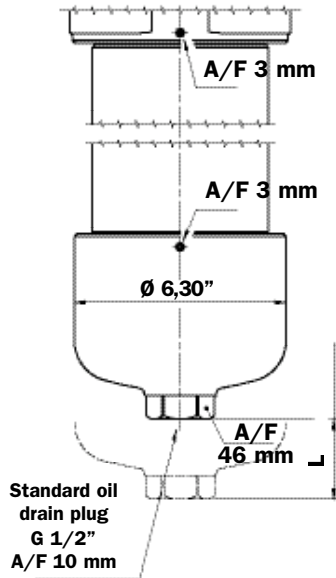


Dimensions

FHP 500



Only for FHP 500 length 4/5



Style P01	
L inch	Filter length
5,9"	4/5

Style P02	
L inch	Filter length
18,9"	4
25,6"	5

Style P01 standard maintenance from head.
Style P02 maintenance option from housing base.

Filter Length	H inch
1	13,19"
2	16,69"
3	19,69"
4	25,87"
5	32,40"

A	E
Threaded Connections	Depth 0,6"
G 1 1/2"	M12
1 1/2" NPT	1/2" UNC
SAE 24 (1 7/8"- 12 UN)	1/2" UNC

Recommended maximum flow rate

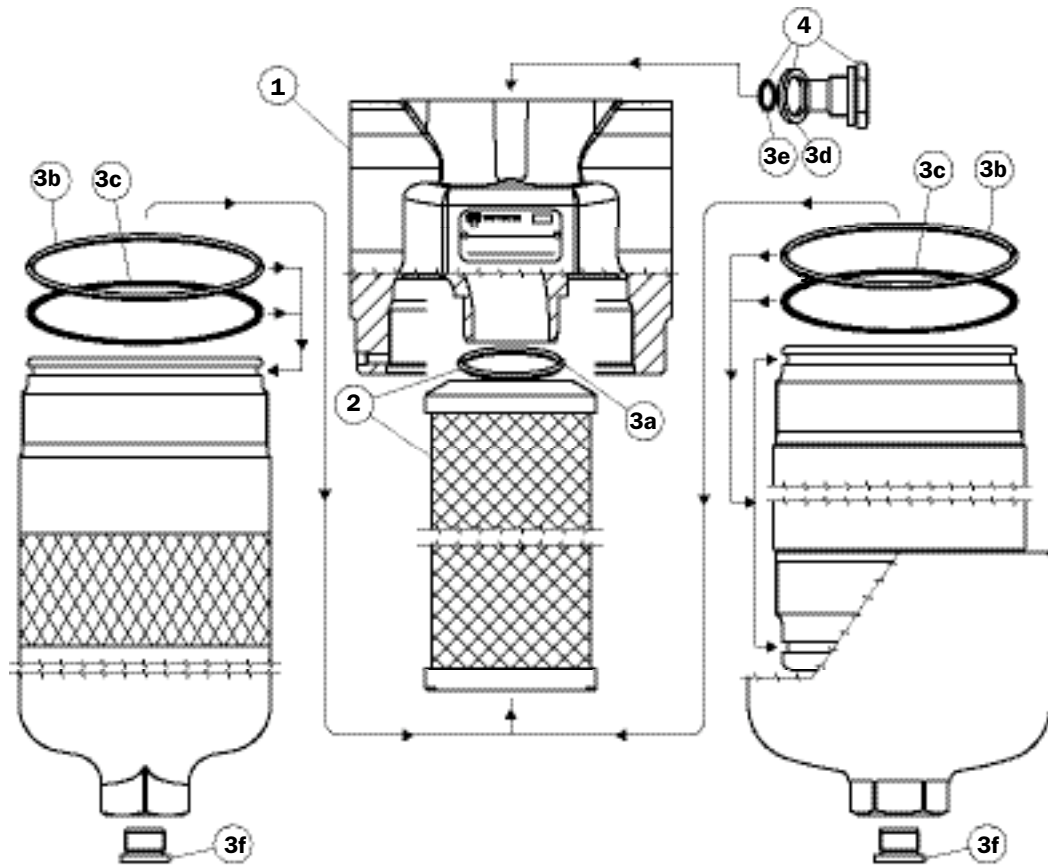
- Pressure drop of complete filter equal to Δp 21,75 psi.
- Oil kinematic viscosity 150 SUS.
- Density 53,69 lbs/ft³.
- Connections of filter under test FLANGE 2" SAE 6000 PSI.

Filter element type	Flow rate gpm Series N	Flow rate gpm Series S	Filter Length
A03	74,0	37,0	1
A06	79,3	43,6	
A10	97,7	68,7	
A16	97,7	72,6	
A25	113,6	97,7	
M25	171,7	-	2
A03	83,2	63,4	
A06	85,2	71,3	
A10	112,3	92,5	
A16	118,9	95,1	
A25	126,8	112,3	3
M25	184,9	-	
A03	103,0	76,6	
A06	105,7	79,3	
A10	122,8	103,0	
A16	124,2	108,3	4
A25	132,1	118,9	
M25	184,9	-	
A03	145,3	103,0	
A06	158,5	118,9	
A10	171,7	122,8	5
A16	171,7	158,5	
A25	184,9	171,7	
M25	198,1	-	
A03	158,5	136,0	
A06	170,4	137,4	5
A10	179,6	170,4	
A16	187,6	171,7	
A25	198,1	190,2	
M25	198,1	-	

A E
Flanged Connections Depth 0,6"

1 1/2" SAE 3000 psi/M	M12
1 1/2" SAE 3000 psi/UNC	1/2" UNC
2" SAE 3000 psi/M	M12
2" SAE 3000 psi/UNC	1/2" UNC
1 1/2" SAE 6000 psi/M	M12
1 1/2" SAE 6000 psi/UNC	1/2" UNC
2" SAE 6000 psi/M	M12
2" SAE 6000 psi/UNC	1/2" UNC

Spare parts FHP 500



Pos.	Description	Qty.	FHP 500 Series FILTER 500 1 - 2 - 3 - 4 - 5	
1	Complete filter	1	See order table	
2	Filter element	1	See order table	
3	Seal kits	1	NBR 02050330	FPM 02050331
3a	Filter element O-Ring	1	OR 153 ID 1,937" x 139"	
3b	O-Ring for housing	2	OR 4462 ID 4,609" x 139"	
3c	Anti-extrusion ring	2	Parbak 247 ID 4,631" x 118"	
3d	Bonded seal	1	G 1/2" - FPM	
3e	O-Ring	1	OR 2050 ID 489" x 070" - FPM	
3f	Oil drain plug	1	G 1/2" with seal	
-	Indicators	1	See order table	
4	Indicator plug	1	T2	

Ordering information FHP 500

Filter assembly

FHP 500

Example: FHP500

Filter element

HP 500

Example: HP500

	1	2	3	4	5	6	7 _a
FHP 500	<input type="checkbox"/>	<input type="checkbox"/>	<input type="checkbox"/>	<input type="checkbox"/>	<input type="checkbox"/>	<input type="checkbox"/>	<input type="checkbox"/>
Example: FHP500	4	B	A	G1	A10	N	P01
Filter element	1	5	3	6	7_b		
HP 500	<input type="checkbox"/>	<input type="checkbox"/>	<input type="checkbox"/>	<input type="checkbox"/>	<input type="checkbox"/>		
Example: HP500	4	A10	A	N	P01		

1 - Filter length

1
2
3
4
5

2 - Bypass valve

S	Without bypass
B	With bypass
V	With Reverse Flow*
D	With bypass + check valve*
T	Without bypass + check valve*

*Reduced cross-section oilways

3 - Seals

A	NBR
V	FPM

4 - Connections

G1	G 1 1/2"
G2	1 1/2" NPT
G3	SAE 24 (1 7/8" 12 UN)
F1	1 1/2" SAE - 3000 PSI/M
F2	1 1/2" SAE - 3000 PSI/UNC
F3	2" SAE - 3000 PSI/M
F4	2" SAE - 3000 PSI/UNC
F5	1 1/2" SAE - 6000 PSI/M
F6	1 1/2" SAE - 6000 PSI/UNC
F7	2" SAE - 6000 PSI/M
F8	2" SAE - 6000 PSI/UNC

5 - Filter elements

A03	Inorganic microfibre 3 µ
A06	Inorganic microfibre 6 µ
A10	Inorganic microfibre 10 µ
A16	Inorganic microfibre 16 µ
A25	Inorganic microfibre 25 µ
M25	Stainless steel mesh 25 µ (style N only)

βx (c) ≥ 1000
See page 9

6 - Filter elements collapse pressure

N	300 psi
S	3000 psi

7 - Options

a) Filter

P01	MP Filtri standard
P02	MP with replacement of the filter element from the cap (only for length 4 and 5)
P03	Oil drain plug (only for length 1 and 2) (standard only for length 3 - 4 - 5)
Pxx	Customer request

b) Filter element

P01	MP Filtri standard
Pxx	Customer request

DIFFERENTIAL INDICATORS (see page 15)

MP Filtri - The filter functions described in this bulletin are valid exclusively for original MP Filtri filter elements and replacement parts. All rights reserved

The data in this publication is marketing information. MP Filtri reserves the right to make changes to the products described herein at any time it deems fit in relation to technical or commercial requirements. The colors of the products shown on the cover are for the illustration purposes only. Copyright. All rights reserved.