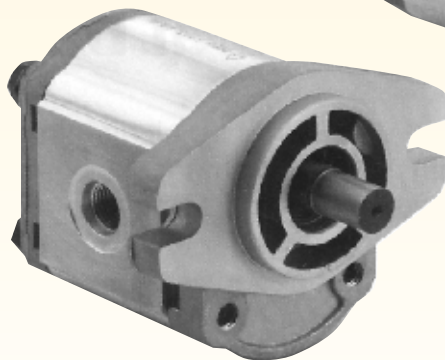
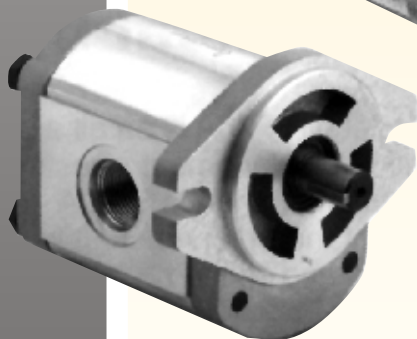
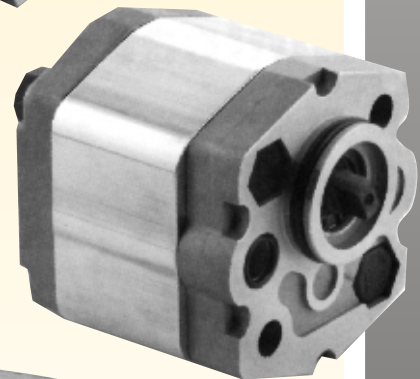
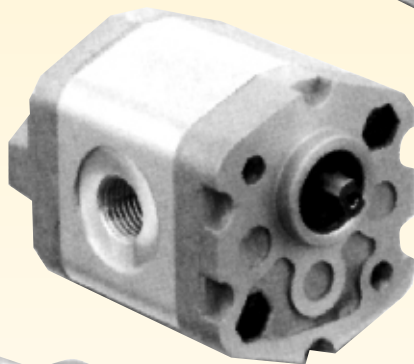
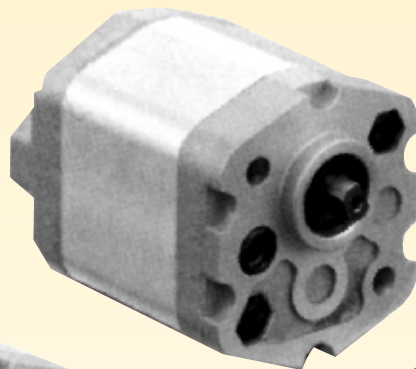
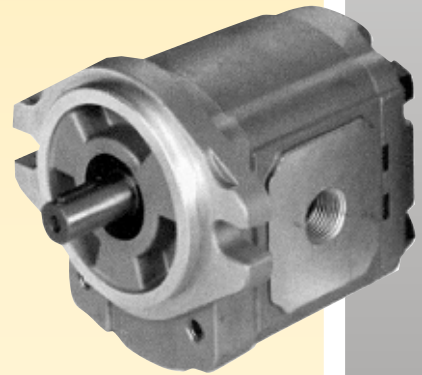


Gear Pumps

Hydraulic

- ◆ GP F0
- ◆ GP F1
- ◆ GP F10
- ◆ GP F20
- ◆ GP F20A



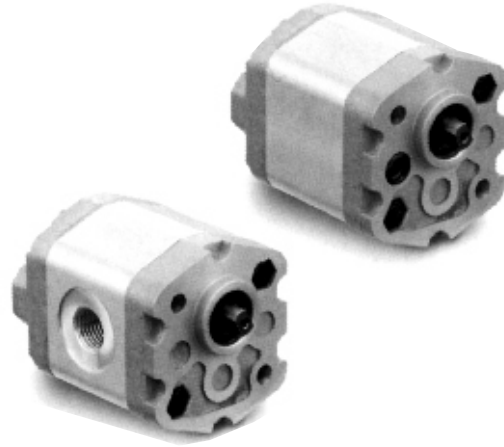
MP FILTRI (CANADA) INC.



Hydraulic Gear Pump - GP-F0

Description

- ◆ GP-F0 is an all aluminum construction, high pressure Mini Hydraulic Gear Pump. The standard mounting flange is as detailed on the installation drawing and porting is any combination of rear, front or side as defined in the ordering example.

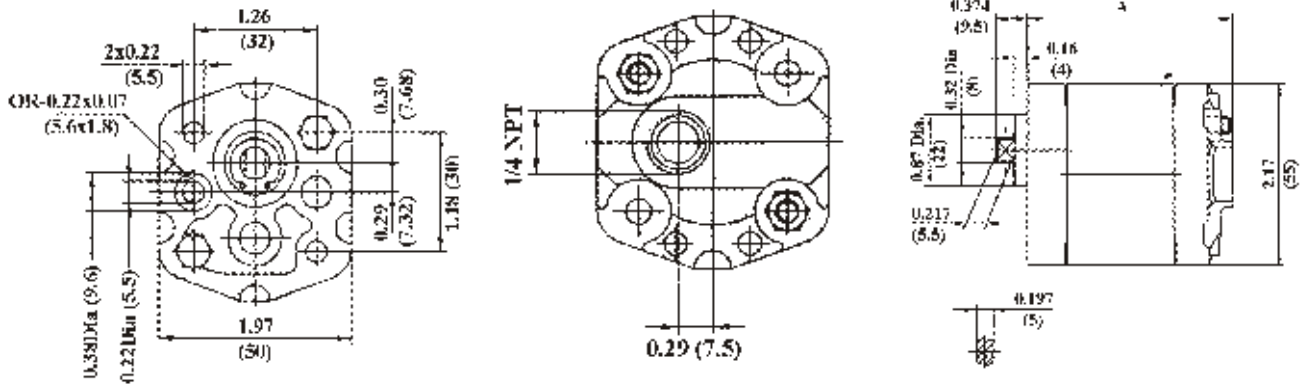


Technical Data

- ◆ Filtration: 25 micron or better
- ◆ Oil Viscosity: 6 to 200 cSt
- ◆ Inlet Pressure: 12 to 32 psi absolute
- ◆ Temperature: Oil: -25°C to 80°C / -12°F to 175°F
Ambient: -22°C to 55°C / -8°F to 130°F

Model	Displacement		Pressure		Speed RPM		Weight	
	cm ³ /rev	cu.in/rev	PSI	Mpa	Rated	Max.	Lbs.	Kg
GP-F0-0.16	0.16	0.009	3000	21	2000	7000	0.82	0.37
GP-F0-0.25	0.25	0.015	3000	21	2000	7000	0.84	0.38
GP-F0-0.50	0.50	0.030	3000	21	2000	7000	0.87	0.39
GP-F0-0.75	0.75	0.045	3000	21	2000	7000	0.91	0.41
GP-F0-1.00	1.00	0.060	3000	21	2000	6000	0.92	0.42
GP-F0-1.25	1.25	0.080	3000	21	2000	5000	1.00	0.45
GP-F0-1.50	1.50	0.090	3000	21	2000	4000	1.04	0.47
GP-F0-1.75	1.75	0.110	3000	21	2000	4000	1.08	0.49
GP-F0-2.00	2.00	0.120	3000	21	2000	3500	1.13	0.51

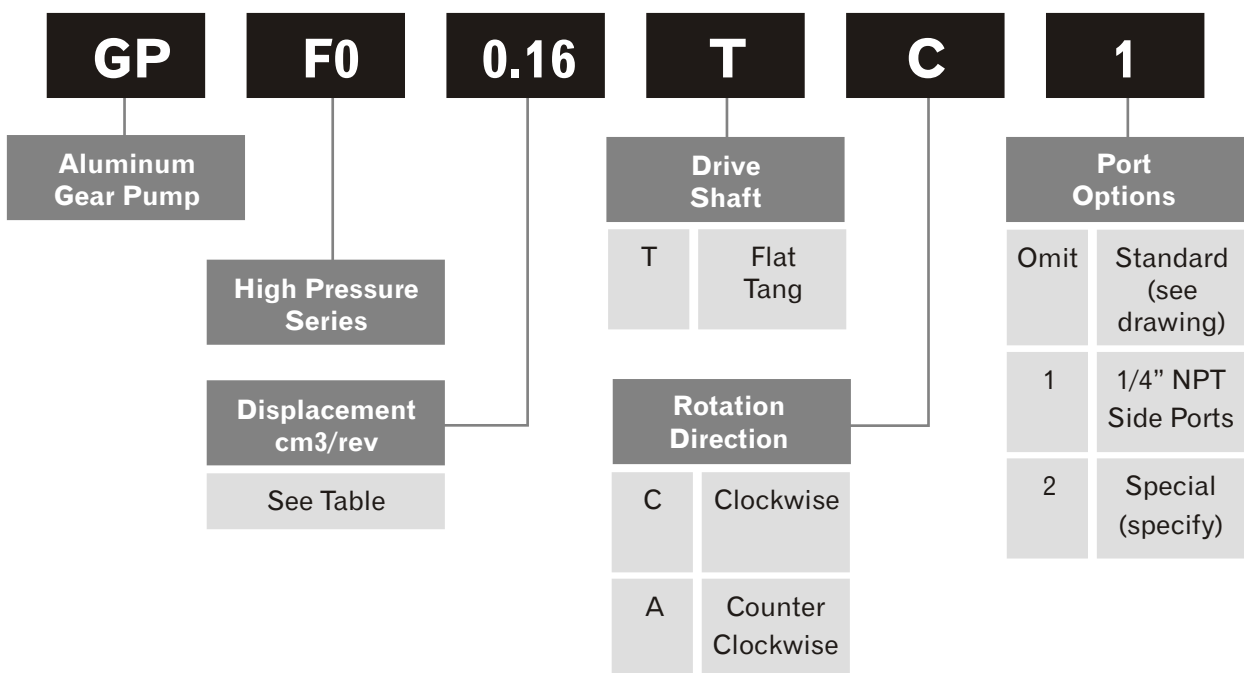
- ◆ Flow rate in gpm - Displacement (cu.in/rev) X speed (rpm)/231
- ◆ Volumetric efficiency % ≥93



Model	A	
	mm	inch
GP-F0-0.16	60	2.36
GP-F0-0.25	61	2.40
GP-F0-0.50	63	2.48
GP-F0-0.75	65	2.55
GP-F0-1.00	68	2.68

Model	A	
	mm	inch
GP-F0-1.25	70	2.75
GP-F0-1.50	72	2.83
GP-F0-1.75	75	2.95
GP-F0-2.00	77	3.03

Ordering Information - GP-F0



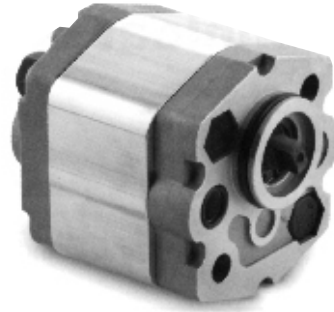
Viewed from drive shaft end



Hydraulic Gear Pump - GP-F1

Description

- ◆ GP-F1 is an all aluminum construction, high pressure Hydraulic Gear Pump.
The standard mounting flange is as detailed on the installation drawing and porting is any combination of rear, front or side as defined in the ordering example.
The drive shaft options include flat tang or tapered keyed.

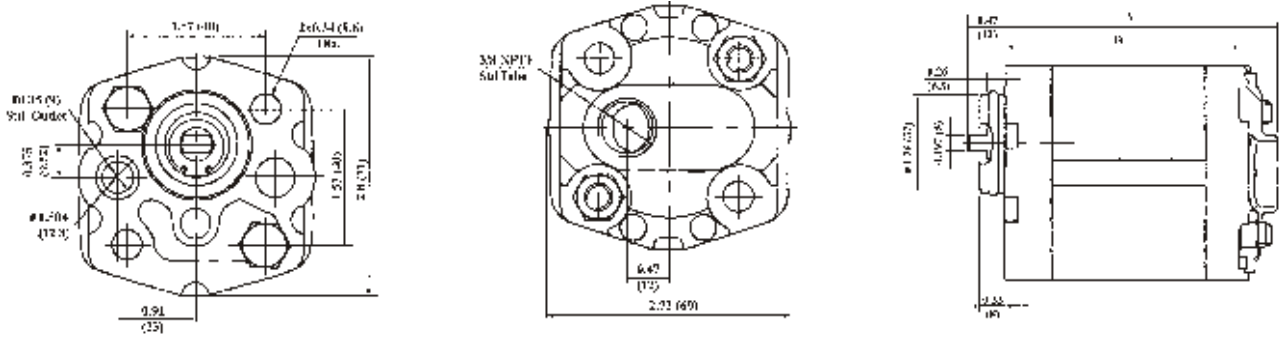


Technical Data

- ◆ Filtration: 25 micron or better
- ◆ Oil Viscosity: 6 to 200 cSt
- ◆ Inlet Pressure: 12 to 32 psi absolute
- ◆ Temperature: Oil: -25°C to 80°C / -12°F to 175°F
Ambient: -22°C to 55°C / -8°F to 130°F

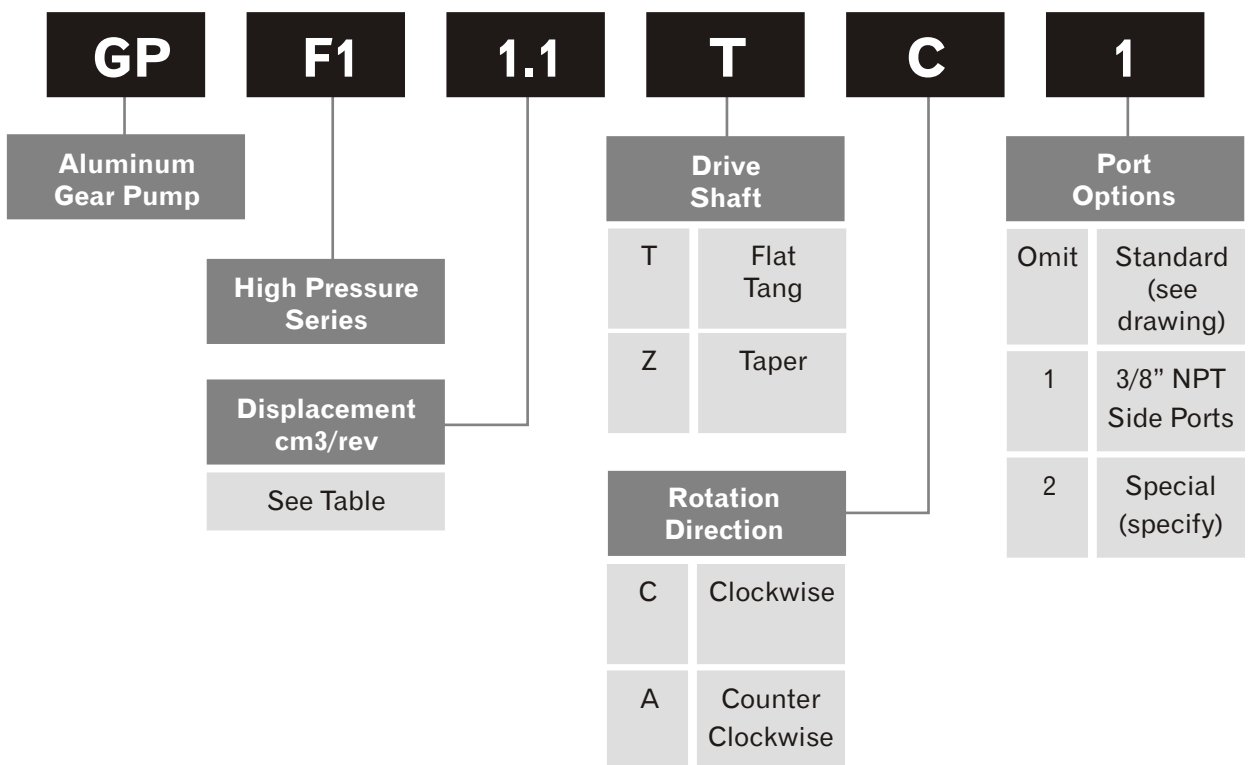
Model	Displacement		Pressure		Speed RPM		Weight	
	cm ³ /rev	cu.in/rev	PSI	Mpa	Rated	Max.	Lbs.	Kg
GP-F1-1.1	1.1	0.06	3650	25	2000	6000	1.69	0.77
GP-F1-1.3	1.3	0.07	3650	25	2000	6000	1.73	0.79
GP-F1-1.6	1.6	0.09	3650	25	2000	6000	1.76	0.80
GP-F1-1.8	1.8	0.10	3650	25	2000	6000	1.78	0.81
GP-F1-2.1	2.1	0.12	3650	25	2000	6000	1.80	0.82
GP-F1-2.7	2.7	0.16	3650	25	2000	6000	1.87	0.85
GP-F1-3.2	3.2	0.19	3650	25	2000	5000	1.91	0.87
GP-F1-3.7	3.7	0.22	3650	25	2000	4500	1.98	0.90
GP-F1-4.2	4.2	0.25	3650	25	2000	4000	2.02	0.92
GP-F1-4.8	4.8	0.29	2900	20	2000	3500	2.09	0.95
GP-F1-5.8	5.8	0.35	2900	20	2000	2900	2.20	1.00
GP-F1-8.0	8.0	0.48	2900	20	2000	2100	2.42	1.10

- ◆ Flow rate in gpm - Displacement (cu.in/rev) X speed (rpm)/231
- ◆ Volumetric efficiency % ≥93



Model	A		B		Model	A		B	
	mm	inch	mm	inch		mm	inch	mm	inch
GP-F1-1.1	74	2.91	62	2.44	GP-F1-3.2	82	3.23	70	2.76
GP-F1-1.3	75	2.95	63	2.48	GP-F1-3.7	84	3.31	72	2.83
GP-F1-1.6	76	2.99	64	2.52	GP-F1-4.2	86	3.39	74	2.91
GP-F1-1.8	77	3.03	65	2.56	GP-F1-4.8	88	3.46	76	2.99
GP-F1-2.1	78	3.07	66	2.60	GP-F1-5.8	92	3.62	80	3.15
GP-F1-2.7	80	3.15	68	2.68	GP-F1-8.0	100	3.94	88	3.46

Ordering Information - GP-F1



Viewed from drive shaft end



Hydraulic Gear Pump - GP-F10

Description

- ◆ GP-F10 is an all aluminum construction, high pressure Hydraulic Gear Pump.
- ◆ Standard mounting flange is SAE AA-2 bolt.
- ◆ Standard ports are SAE-8 inlet and SAE-6 outlet.
- ◆ Standard drive shaft is 1/2" straight shaft with 1/8" key.



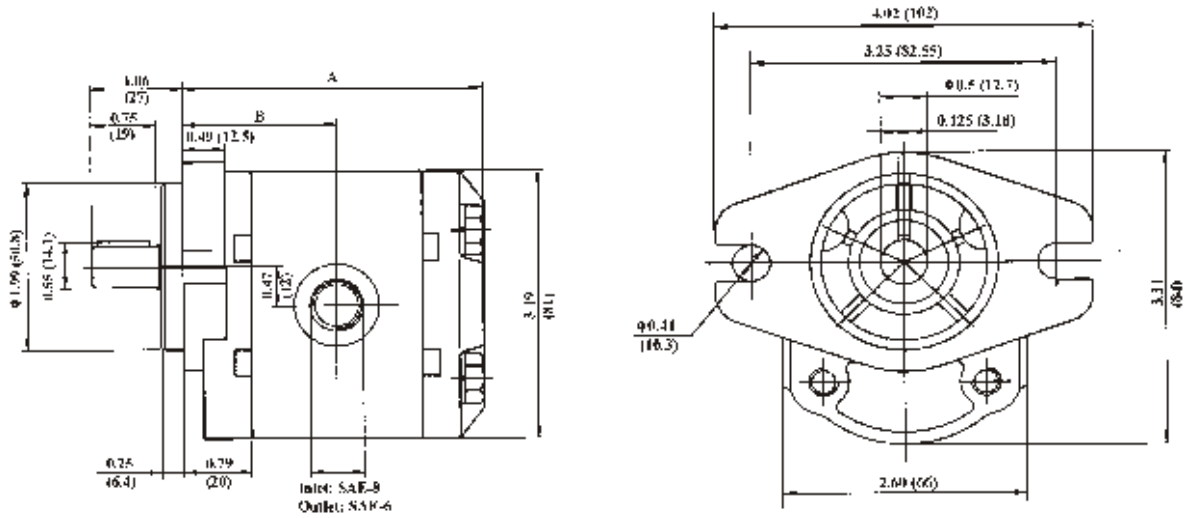
Technical Data

- ◆ Filtration: 25 micron or better
- ◆ Oil Viscosity: 6 to 200 cSt
- ◆ Inlet Pressure: 12 to 32 psi absolute
- ◆ Temperature: Oil: -25°C to 80°C / -12°F to 175°F
Ambient: -22°C to 55°C / -8°F to 130°F
- ◆ Port Sizes: Inlet: SAE-8 (3/4"-16 UNF)
Outlet: SAE-6 (9/16"-18 UNF)

Model	Displacement		Pressure		Speed RPM		Weight	
	cm ³ /rev	cu.in/rev	PSI	Mpa	Rated	Max.	Lbs.	Kg
GP-F10-1.3	1.3	0.07	3625	25	2000	5000	2.02	0.92
GP-F10-2.0	2.0	0.12	3625	25	2000	5000	2.31	1.05
GP-F10-2.7	2.7	0.16	3625	25	2000	5000	2.68	1.22
GP-F10-3.4	3.4	0.20	3625	25	2000	5000	2.99	1.36
GP-F10-4.1	4.1	0.25	3625	25	2000	4000	3.34	1.52
GP-F10-5.1	5.1	0.35	3625	25	2000	4000	3.78	1.72
GP-F10-6.1	6.1	0.37	3625	25	2000	4000	4.18	1.90

- ◆ Flow rate in gpm - Displacement (cu.in/rev) X speed (rpm)/231
- ◆ Volumetric efficiency % ≥93

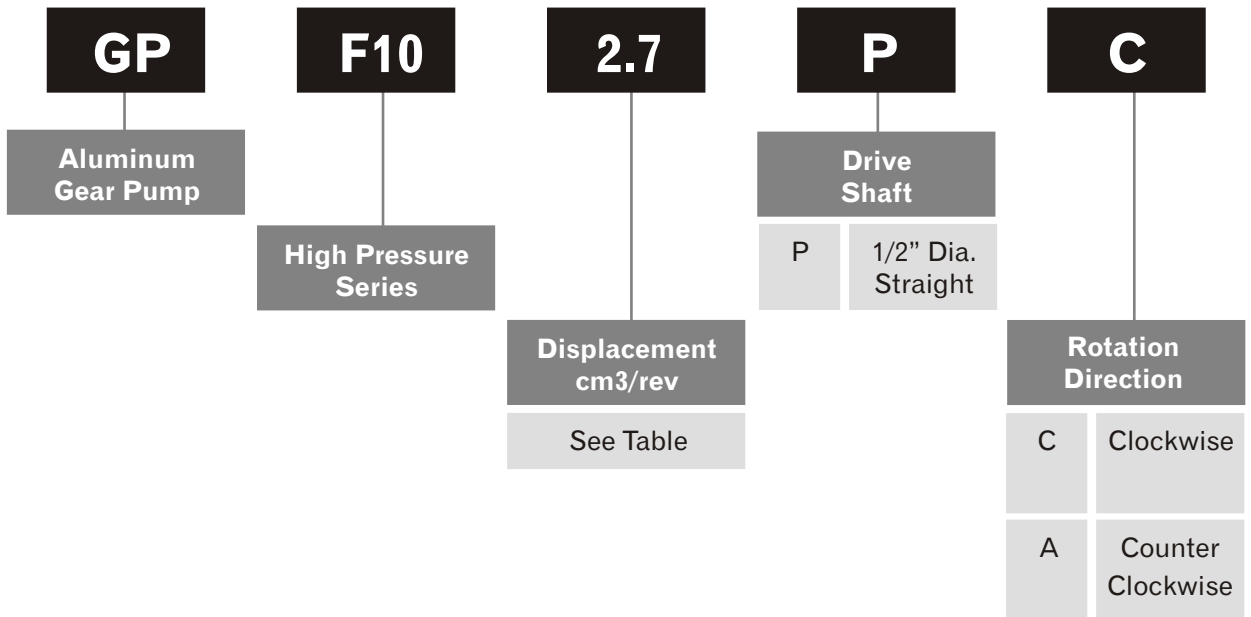
Installation Data



Model	A		B	
	mm	inch	mm	inch
GP-F10-1.3	82	3.23	42	1.65
GP-F10-2.0	84	3.31	43	1.69
GP-F10-2.7	86	3.39	44	1.73
GP-F10-3.4	88	3.46	45	1.77

Model	A		B	
	mm	inch	mm	inch
GP-F10-4.1	90	3.54	46	1.81
GP-F10-5.1	93	3.66	47.5	1.87
GP-F10-6.1	96	3.78	49	1.93

Ordering Information - GP-F10



Viewed from drive shaft end



Hydraulic Gear Pump - GP-F20

Description

- ◆ GP-F20 is a high pressure hydraulic gear pump with cast iron end caps and an aluminum housing.
- ◆ Standard mounting flange is SAE A-2 bolt.
- ◆ Standard ports are SAE-12 inlet and SAE-10 outlet.
- ◆ Optional rear ports available.
- ◆ Standard drive shaft is 5/8" straight shaft with 5/32" key.
- ◆ Optional shafts include an SAE 9 tooth spline and a 3/4" straight shaft with a 3/16" key.



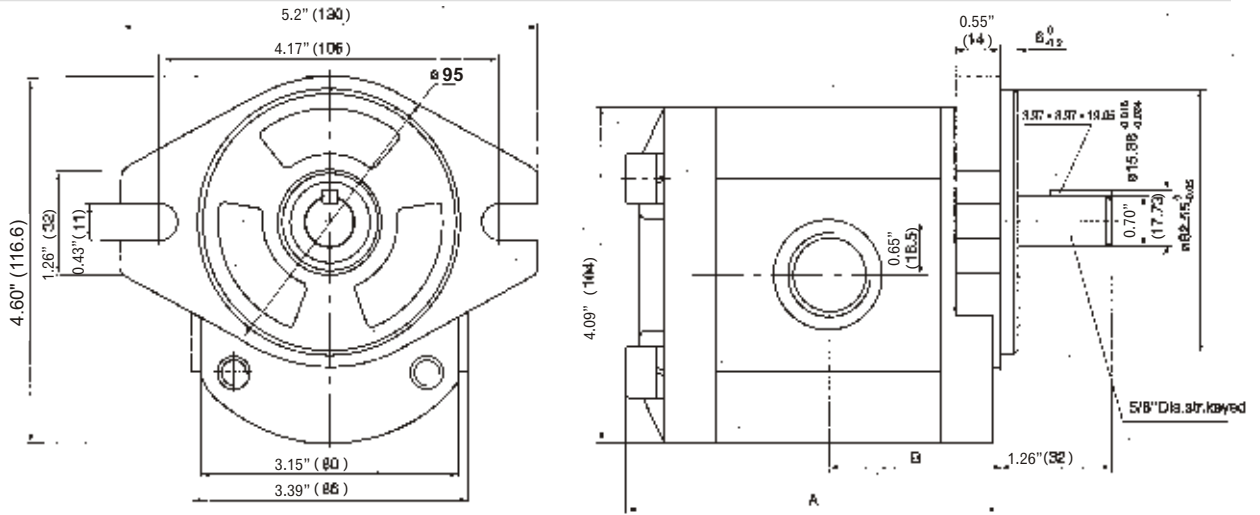
Technical Data

- ◆ Filtration: 25 micron or better
- ◆ Oil Viscosity: 6 to 200 cSt
- ◆ Inlet Pressure: 12 to 32 psi absolute
- ◆ Temperature: Oil: -25°C to 80°C / -12°F to 175°F
Ambient: -22°C to 55°C / -8°F to 130°F
- ◆ Port Sizes: Inlet: SAE-12 (1-1/16"-12 UNF)
Outlet: SAE-10 (7/8"-14 UNF)

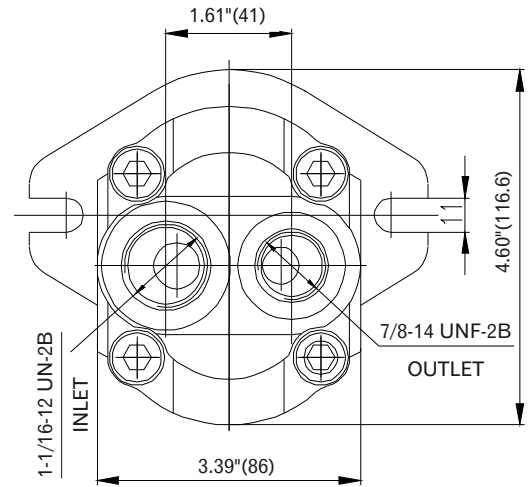
Model	Displacement		Pressure		Speed RPM		Weight	
	cm ³ /rev	cu.in/rev	PSI	Mpa	Rated	Max.	Lbs.	Kg
GP-F20-6.0	6.0	0.36	3650	25	2000	3600	5.35	2.45
GP-F20-7.0	7.0	0.43	3650	25	2000	3600	5.28	2.40
GP-F20-8.0	8.0	0.48	3650	25	2000	3600	5.61	2.55
GP-F20-10	10	0.61	3650	25	2000	3600	5.72	2.60
GP-F20-11	11	0.67	3650	25	2000	3600	5.83	2.65
GP-F20-12	12	0.73	3650	25	2000	3600	5.91	2.69
GP-F20-14	14	0.85	3650	25	2000	3600	6.00	2.73
GP-F20-16	16	0.97	2900	20	2000	3000	6.27	2.85
GP-F20-20	20	1.22	2900	20	2000	3000	6.73	3.06
GP-F20-22	22	1.34	2900	20	2000	3000	6.90	3.14
GP-F20-25	25	1.52	2900	20	2000	3000	7.19	3.27

- ◆ Flow rate in gpm - Displacement (cu.in/rev) X speed (rpm)/231
- ◆ Volumetric efficiency % ≥93

Installation Data



Model	A		B	
	mm	inch	mm	inch
GP-F20-6.0	98	3.87	45	1.77
GP-F20-7.0	99.5	3.91	45.75	1.80
GP-F20-8.0	100	3.95	47	1.85
GP-F20-10	104	4.12	48	1.89
GP-F20-11	106	4.17	49	1.93
GP-F20-12	108	4.25	50	1.97
GP-F20-14	110	4.35	51	2.0
GP-F20-16	114	4.50	52.5	2.07
GP-F20-20	120	4.75	56	2.20
GP-F20-22	123	4.92	57.5	2.26
GP-F20-25	128	5.05	60	2.36



Ordering Information - GP-F20

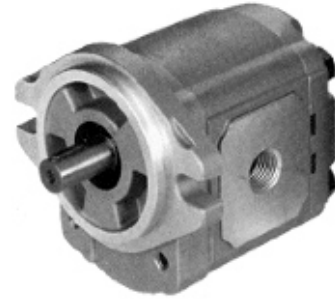
GP	F20	16	P	C	R
Aluminum Gear Pump	High Pressure Series	Displacement cm ³ /rev See Table	Drive Shaft	Rotation Direction	Port Location
			P 5/8" Dia. Straight	C Clockwise	Blank Side (standard)
			P1 3/4" Dia. Straight	A Counter Clockwise	R* Rear
			S9 Spline 9 tooth	Viewed from drive shaft end	*Special order



Hydraulic Gear Pump - GP-F20A

Description

- ◆ GP-F20A is an all aluminum construction, high pressure Hydraulic Gear Pump.
- ◆ Standard mounting flange is SAE A-2 bolt.
- ◆ Standard ports are SAE-16 inlet and SAE-12 outlet.
- ◆ Standard drive shaft is 5/8" straight shaft with 5/32 key.
- ◆ Available options include 3/4" straight shaft with 3/16" key.

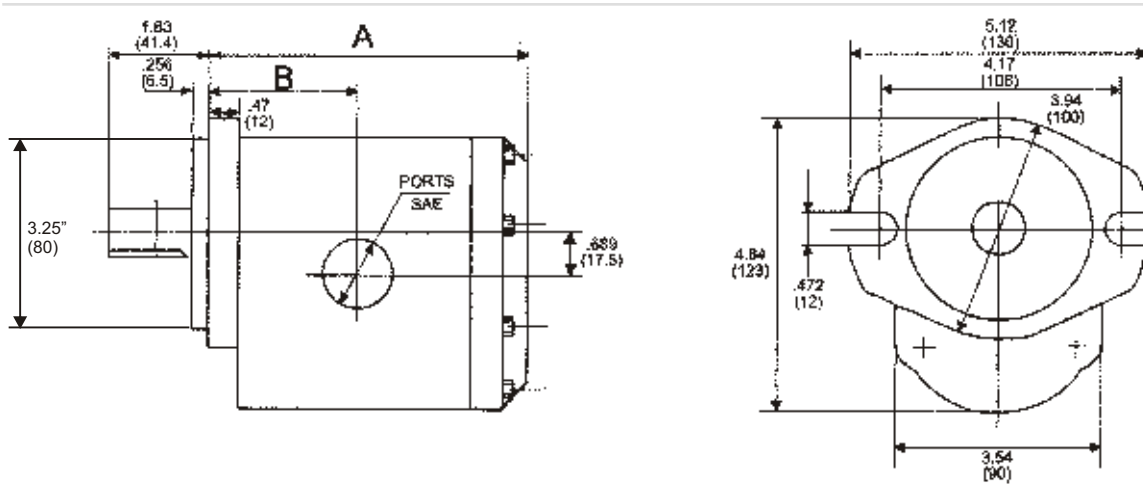


Technical Data

- ◆ Filtration: 25 micron or better
- ◆ Oil Viscosity: 6 to 200 cSt
- ◆ Inlet Pressure: 12 to 32 psi absolute
- ◆ Temperature: Oil: -25°C to 80°C / -12°F to 175°F
Ambient: -22°C to 55°C / -8°F to 130°F

Model	Displacement		Pressure		Speed RPM		Weight	
	cm ³ /rev	cu.in/rev	PSI	Mpa	Rated	Max.	Lbs.	Kg
GP-F20A-10	10	0.61	3650	25	2000	3000	7.26	3.3
GP-F20A-16	16	0.97	3650	25	2000	3000	7.7	3.5
GP-F20A-25	25	1.52	3650	25	2000	3000	8.36	3.8
GP-F20A-27	27	1.61	3650	25	2000	3000	8.58	3.9
GP-F20A-30	30	1.83	3650	25	2000	3000	8.8	4
GP-F20A-32	32	1.95	3650	25	2000	3000	9.02	4.1
GP-F20A-40	40	2.44	3650	25	2000	3000	9.46	4.3

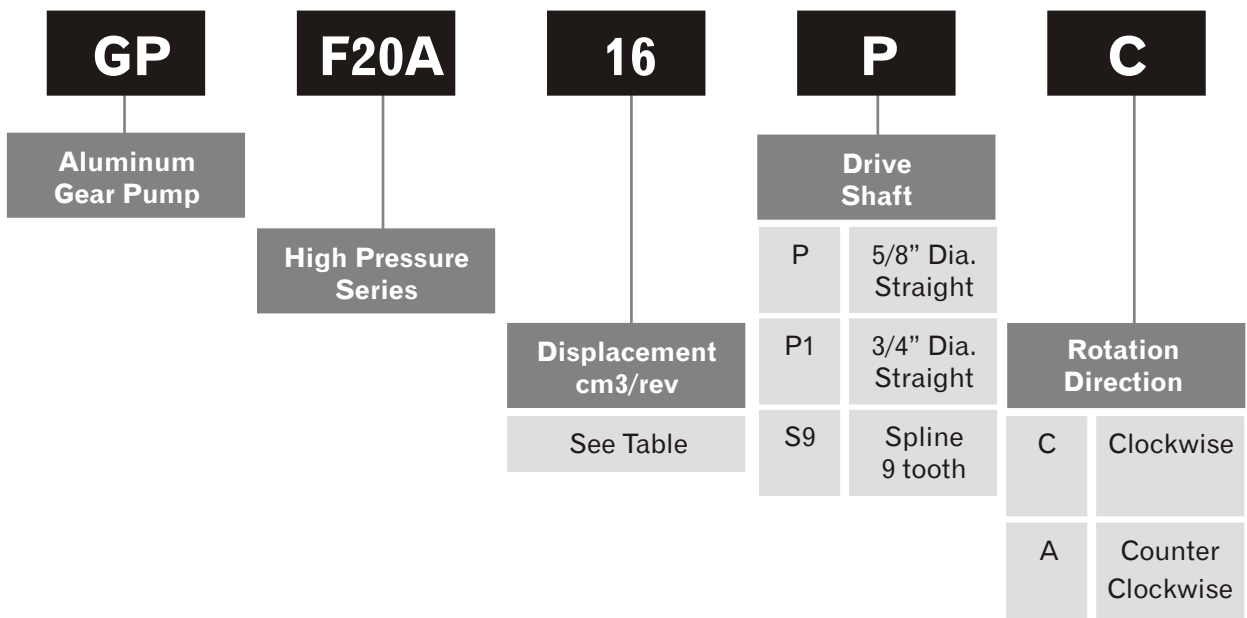
- ◆ Flow rate in gpm - Displacement (cu.in/rev) X speed (rpm)/231
- ◆ Volumetric efficiency % ≥93



Model	A		B	
	mm	inch	mm	inch
GP-F20A-10	108	4.25	53.5	2.1
GP-F20A-16	114	4.48	56.5	2.22
GP-F20A-25	124	4.88	62	2.44
GP-F20A-27	126	4.96	62.5	2.46

Model	A		B	
	mm	inch	mm	inch
GP-F20A-30	130.5	5.13	65	2.55
GP-F20A-32	133	5.23	65	2.55
GP-F20A-40	142	5.59	70	2.75

Ordering Information - GP-F20A



Viewed from drive shaft end